



# MONTHLY MEMBERSHIP PROGRESS REPORT

District 410 D

Results as of: 06/30/2018

GMT: RASHMI KOOVERJEE

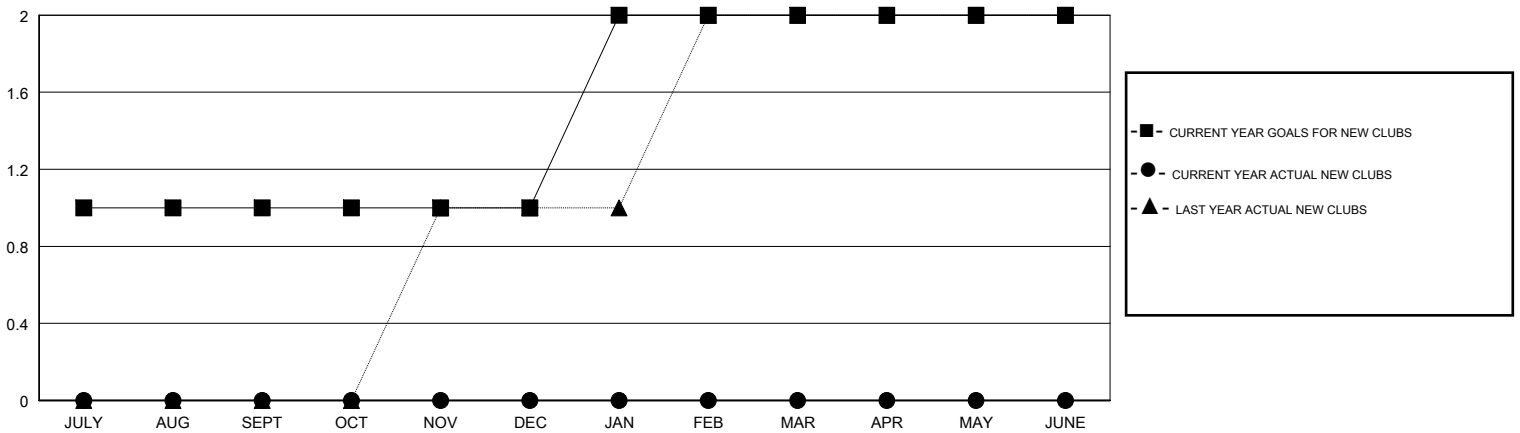
LOCATION REP OF SOUTH AFRICA

GMT CA

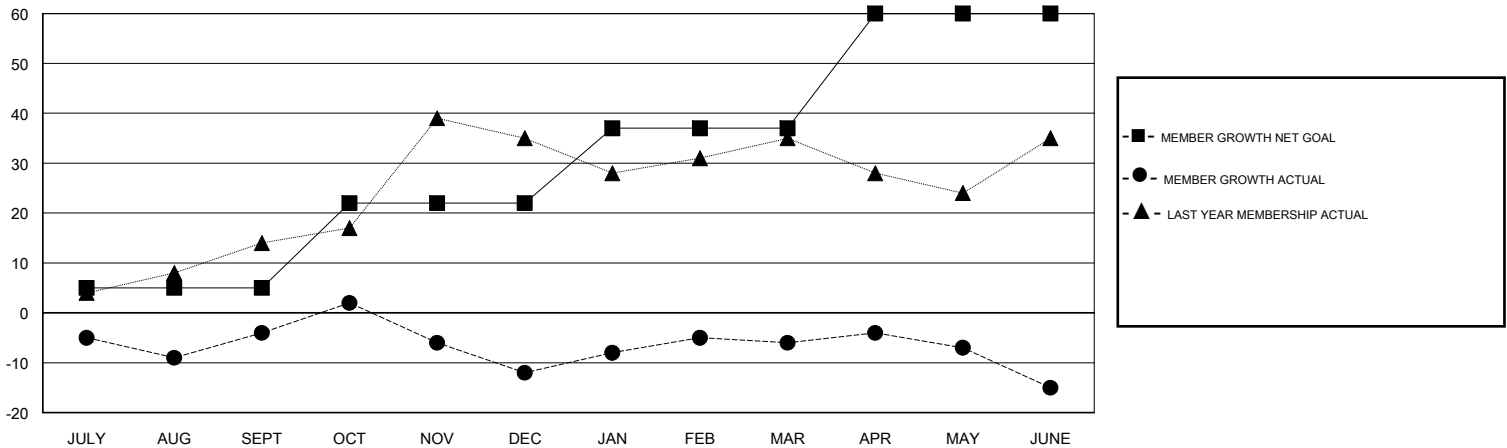
Clubs			
RESULTS FOR 2017-2018			
QUARTER	NEW CLUB GOAL	NEW CLUBS	DROPPED CLUBS
JULY/AUG/SEPT	1	0	0
OCT/NOV/DEC	0	0	0
JAN/FEB/MAR	1	0	0
APR/MAY/JUNE	0	0	5

Members			
RESULTS FOR 2017-2018			
QUARTER	MEMBER GROWTH NET GOAL	MEMBER GROWTH ACTUAL	DROPPED MEMBERS ACTUAL (including transfers)
JULY/AUG/SEPT	5	12	15
OCT/NOV/DEC	17	14	22
JAN/FEB/MAR	15	18	7
APR/MAY/JUNE	23	34	41

GOALS AND ACTUAL NEW CLUBS CUMULATIVE



GOALS AND ACTUAL MEMBERS CUMULATIVE



DROPPED CLUBS: 5

17 CLUBS OF 31 ADDED 1 OR MORE NEW MEMBERS

GENDER DISTRIBUTION  
 MALE 212 (58.24%)  
 FEMALE 152 (41.76%)  
 Women Percentage Fiscal Year Goal: 40%

DROPPED MEMBERS	
DECEASED	5
CLUB CANCELLED	12
OTHER	68
<b>TOTAL</b>	<b>85</b>

[CLICK HERE FOR CUMULATIVE MEMBERSHIP DATA](#)

TOTAL FAMILY UNIT MEMBERS	0
FAMILY MEMBERS PAYING HALF DUES	0